

Engineering surface test



9"dc cut with a CDC type 1



9"dc cut with a CDC type 1



6,5"dc cut with a CDC type 2



9,5"dc cut with a CDC type 3



8"dc cut with a CDC type 4



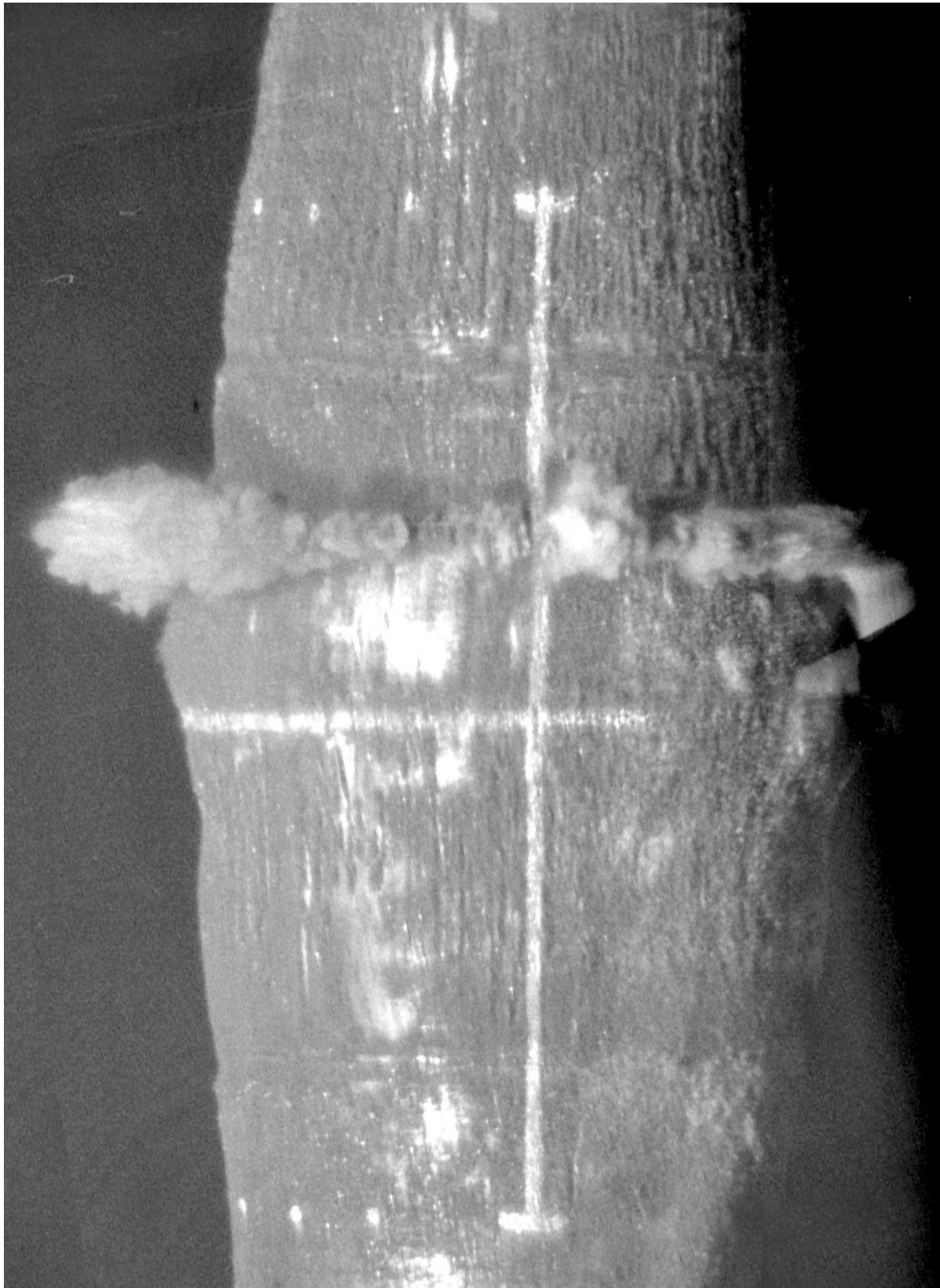
4,5"dc cut with a CDC type 5



*Product engineering  
for SwETech AB  
Colliding Tools*

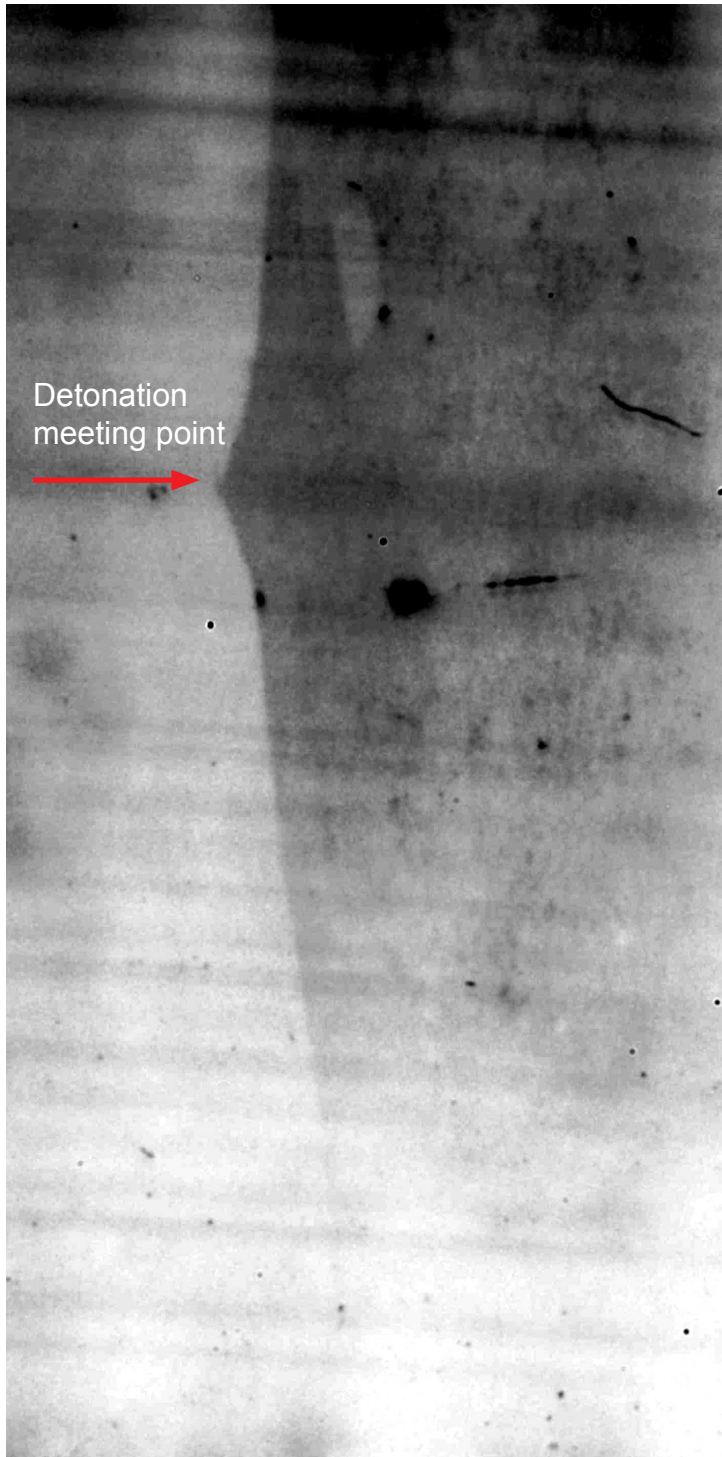


Test conducted with high speed camera

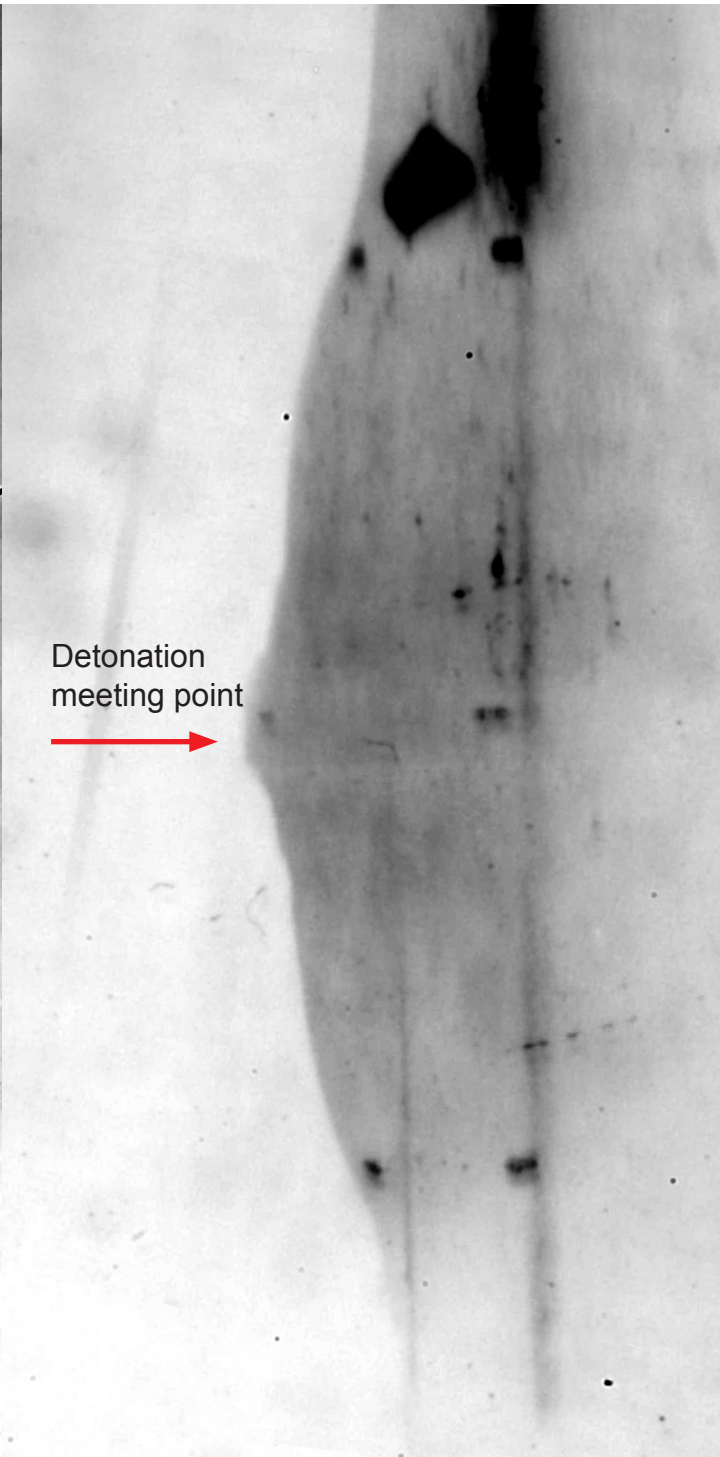


Test conducted with a CDC type 1 in a 5 1/2" pipe in the connection.

Test conducted with high speed camera



Test conducted with a CDC type 3 in a 9" drill collar.



Test conducted with a CDC type 1 in a 5. 1/2" pipe.

All photos shows the detonation meeting point 2.7 milliseconds after initiation.

The vertical line on the pipe in the left photo is the length (300 mm) of the explosive charge in the CDC. The horizontal white line on the pipe shows the center of the charge.